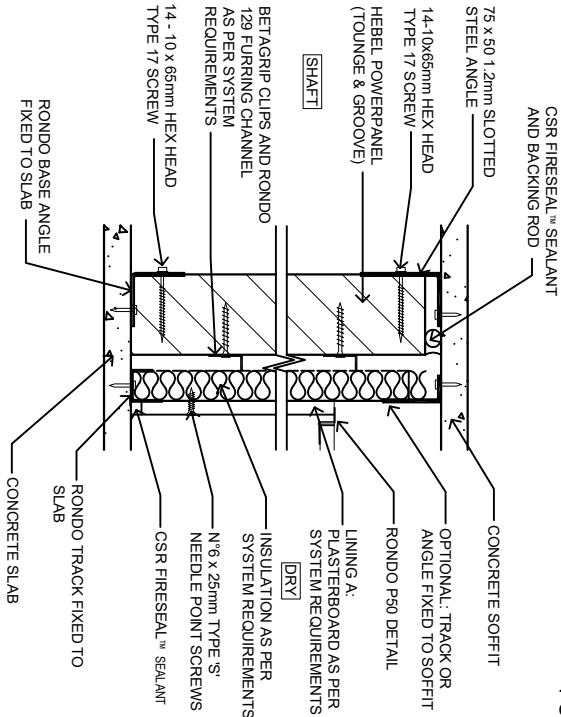
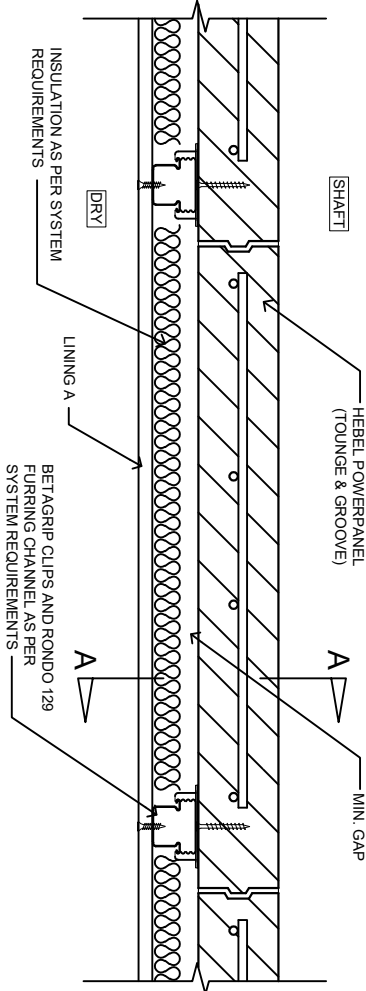


HEBEL SHAFT WALLS

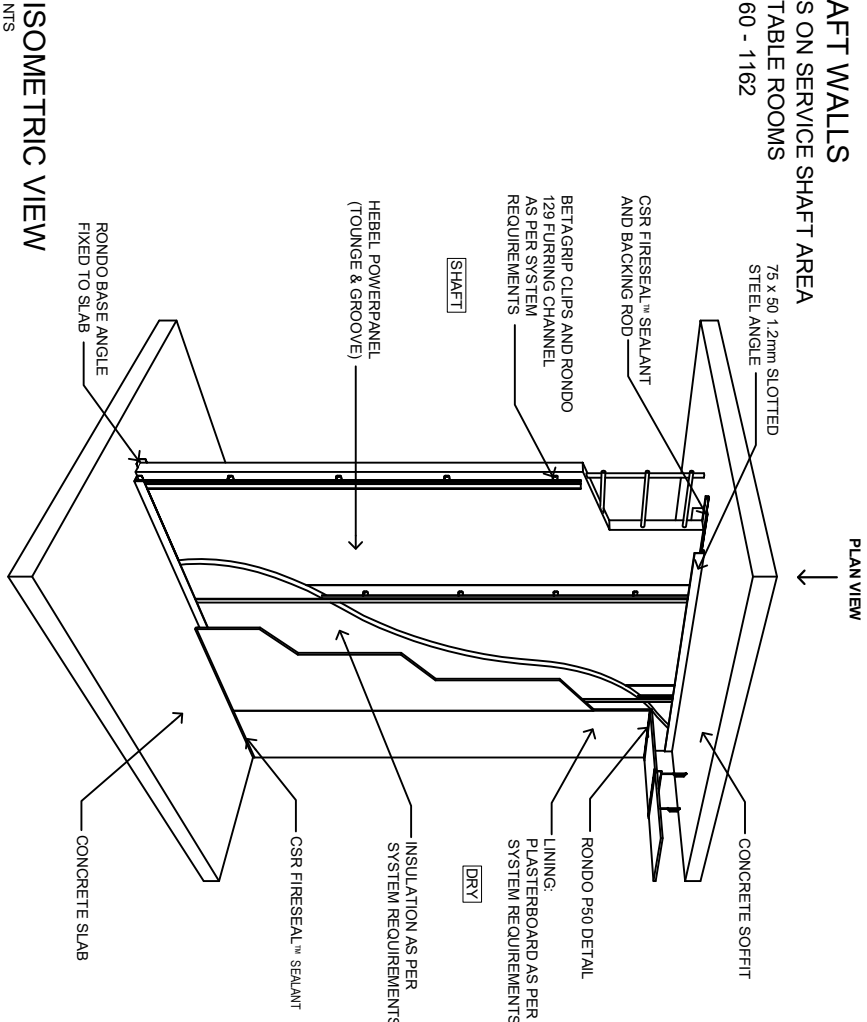
FOR GENERAL PARTITIONS ON SERVICE SHAFT AREA
TO DRY HABITABLE ROOMS
Hebel1160 - 1162



VERTICAL CROSS SECTION DETAIL A-A



DETAIL PLAN VIEW



ISOMETRIC VIEW

CODE	APPLICATION	WALL THICKNESS	WALL HEIGHT 'H'	FRL ¹⁶	R+C ¹⁶	SYSTEM COMPONENT VARIATIONS		
						MIN. GAP	INSULATION ¹⁶	LINING A
Hebel1160	SHAFT TO DRY	131mm	UP TO 3.3m HIGH	+/-90/90 FOR WALL HEIGHTS UP TO 3.3m	40	43mm	50mm BRADFORD ACOUSTIGARD 11	13mm GYPROCK CD
Hebel1162	SHAFT TO WET	116mm	UP TO 3.3m HIGH	+/-90/90 FOR WALL HEIGHTS UP TO 3.3m	28	28mm	NIL	13mm AQUACHEK

REFER TO DESIGN AND INSTALLATION GUIDES FOR HIGH RISE INTERTENANCY AND SERVICE WALLS (HEB 1354) FOR MORE CONSTRUCTION AND PRODUCT INFORMATION.
FOR WALLS > 3.3m AND ≤ 4.65m, CAGED TONGUE & GROOVE POWERPANEL CAN BE USED AND WILL ACHIEVE A FRL OF +/120/120. REFER TO DESIGN AND INSTALLATION GUIDES FOR SHAFT AND SCISSOR STAIR WALLS (HELT 032) FOR MORE DETAILED INFORMATION.