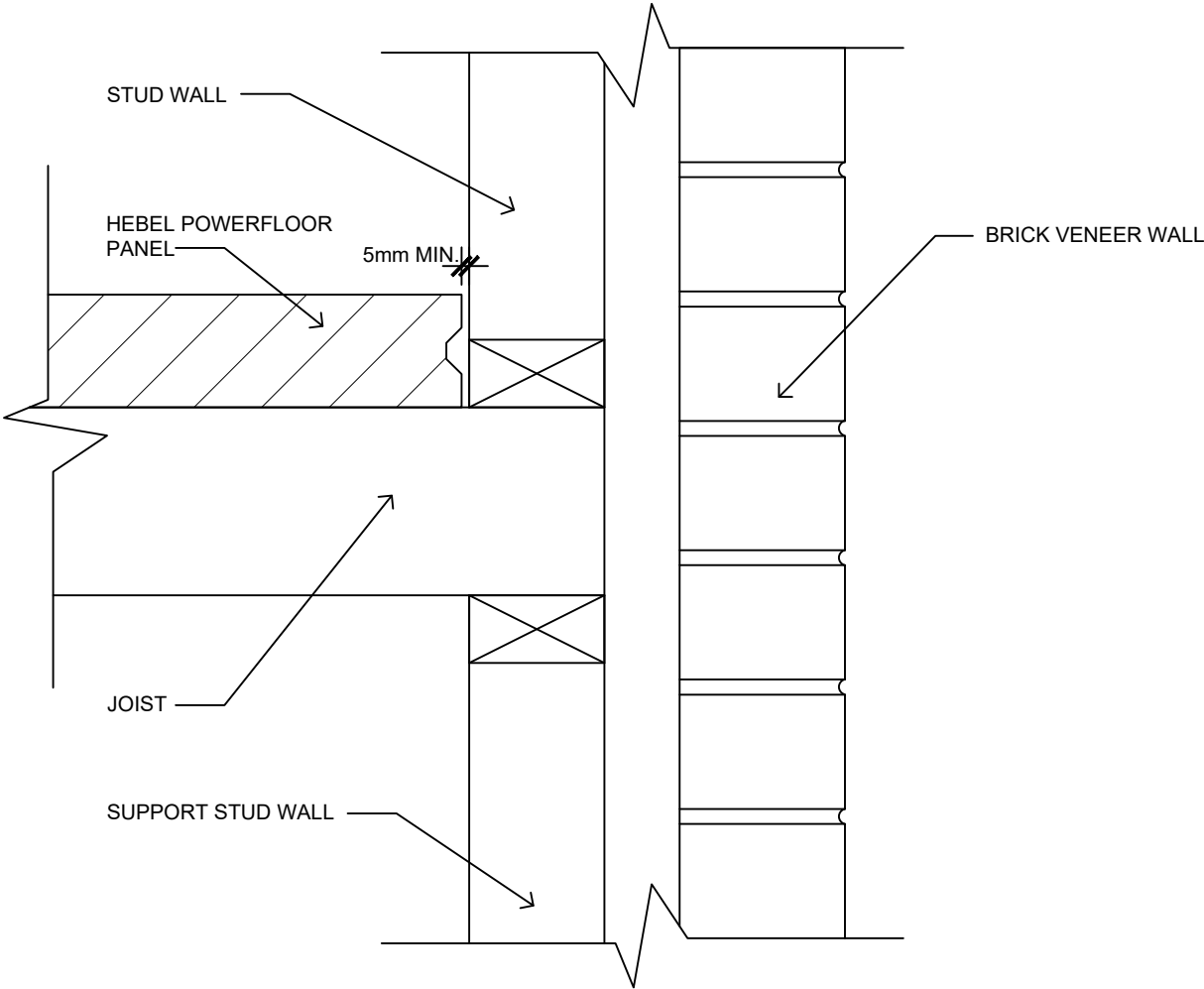
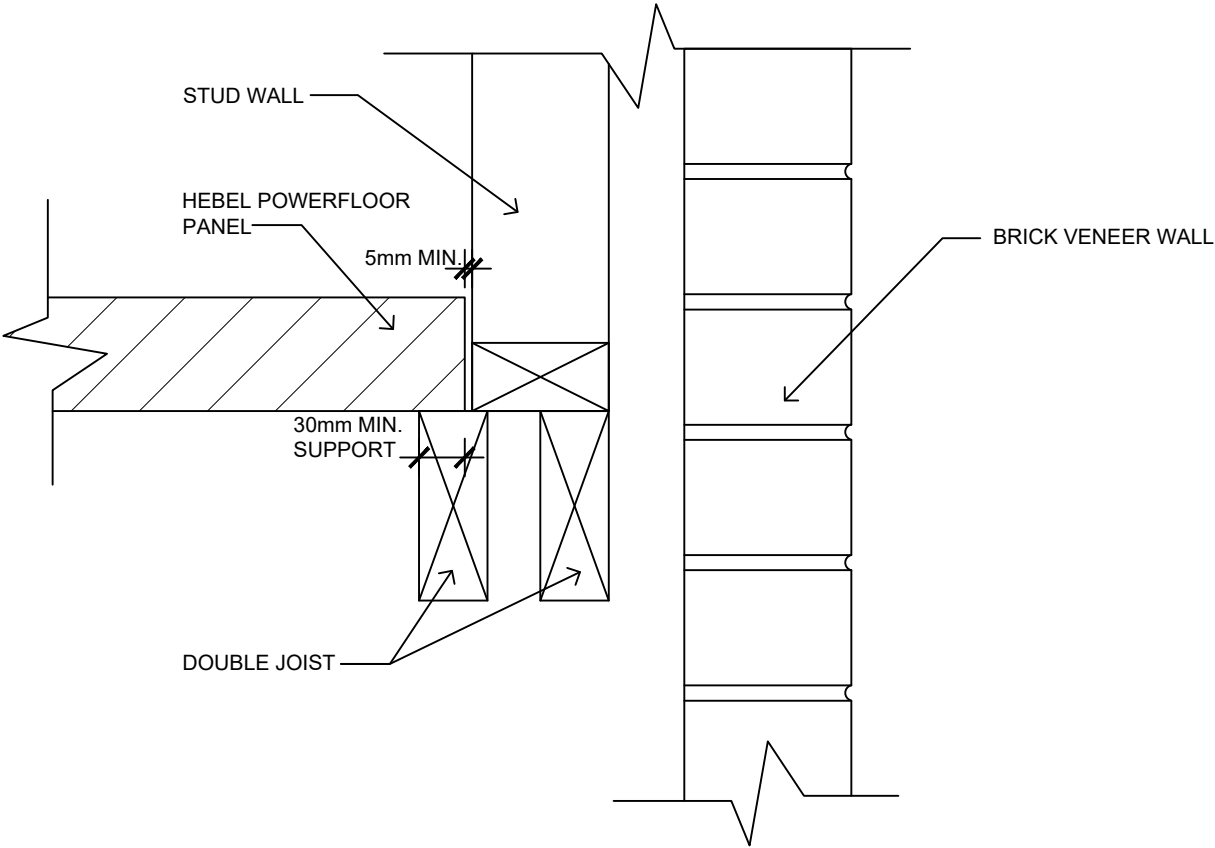


HEBEL POWERFLOOR MULTI-LEVEL CONSTRUCTION DETAILS

NOTE:
- FITTED FLOORING IS REQUIRED WHERE THE BEARING STRESS IN THE HEBEL POWERFLOOR PANEL, AT THE TOP OF JOISTS OR THE TOP OF BLOCKING BETWEEN JOISTS EXCEEDS 1MPa.
- THE DETAILING OF THE CLADDING SYSTEM SHOWN BELOW IS FOR INDICATIVE PURPOSES ONLY. THE PROJECT DESIGNER SHALL SPECIFY THE CONSTRUCTION DETAILS FOR THE PROJECT.



HEBEL FITTED FLOORING WITH
EXTERNAL LOADBEARING WALL
SCALE: 1:5



HEBEL FLOOR END SUPPORT FOR
FITTED FLOORING
SCALE: 1:5



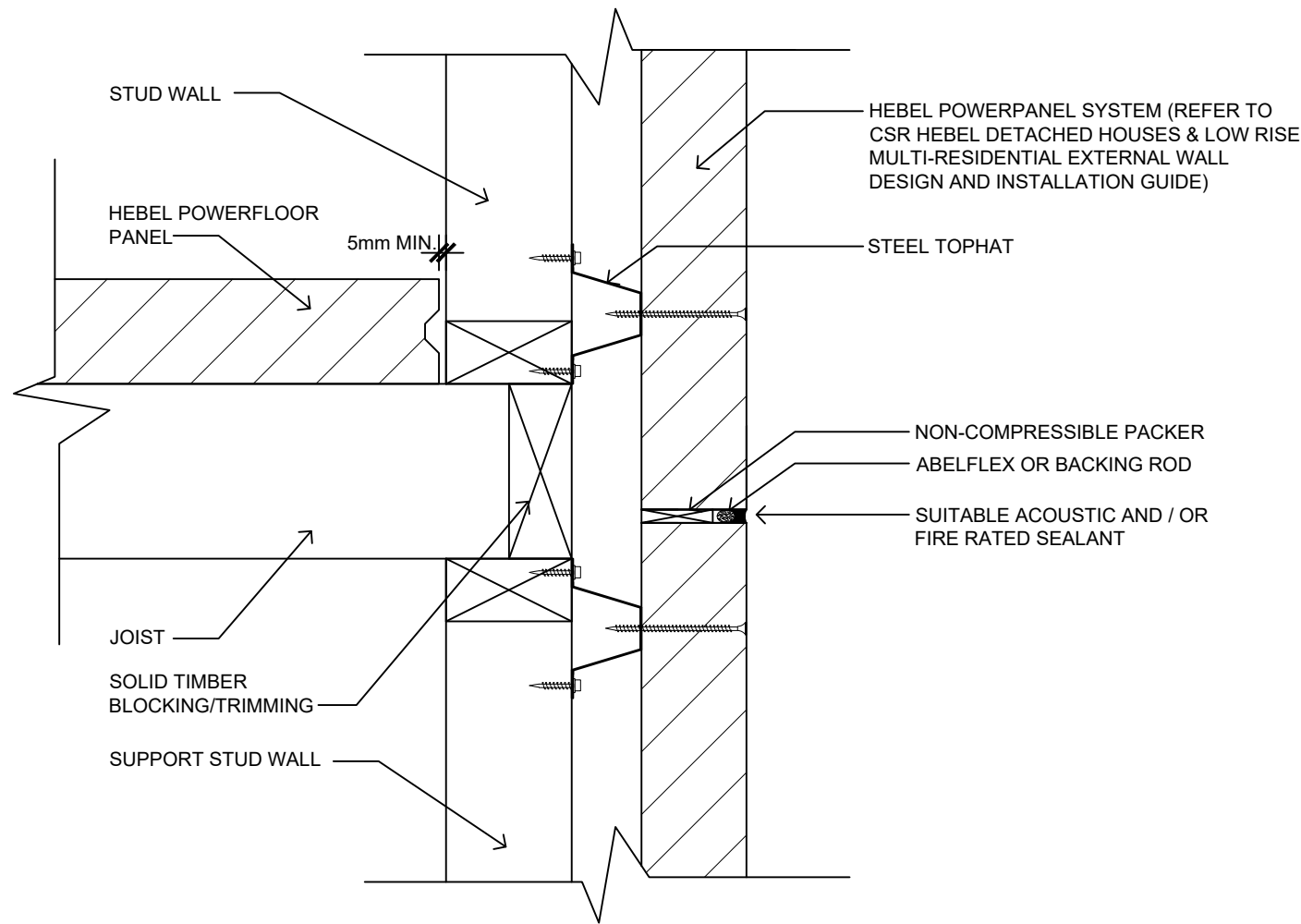
CSR BUILDING PRODUCTS LTD
Head Office: Trinitii 3, 39 DELHI RD, NORTH RYDE NSW 2113
LOCKED BAG 1345, NORTH RYDE BC NSW 1670
A.B.N. 55 008 631 356 Ph: 1300 369 448
www.hebelaustralia.com.au



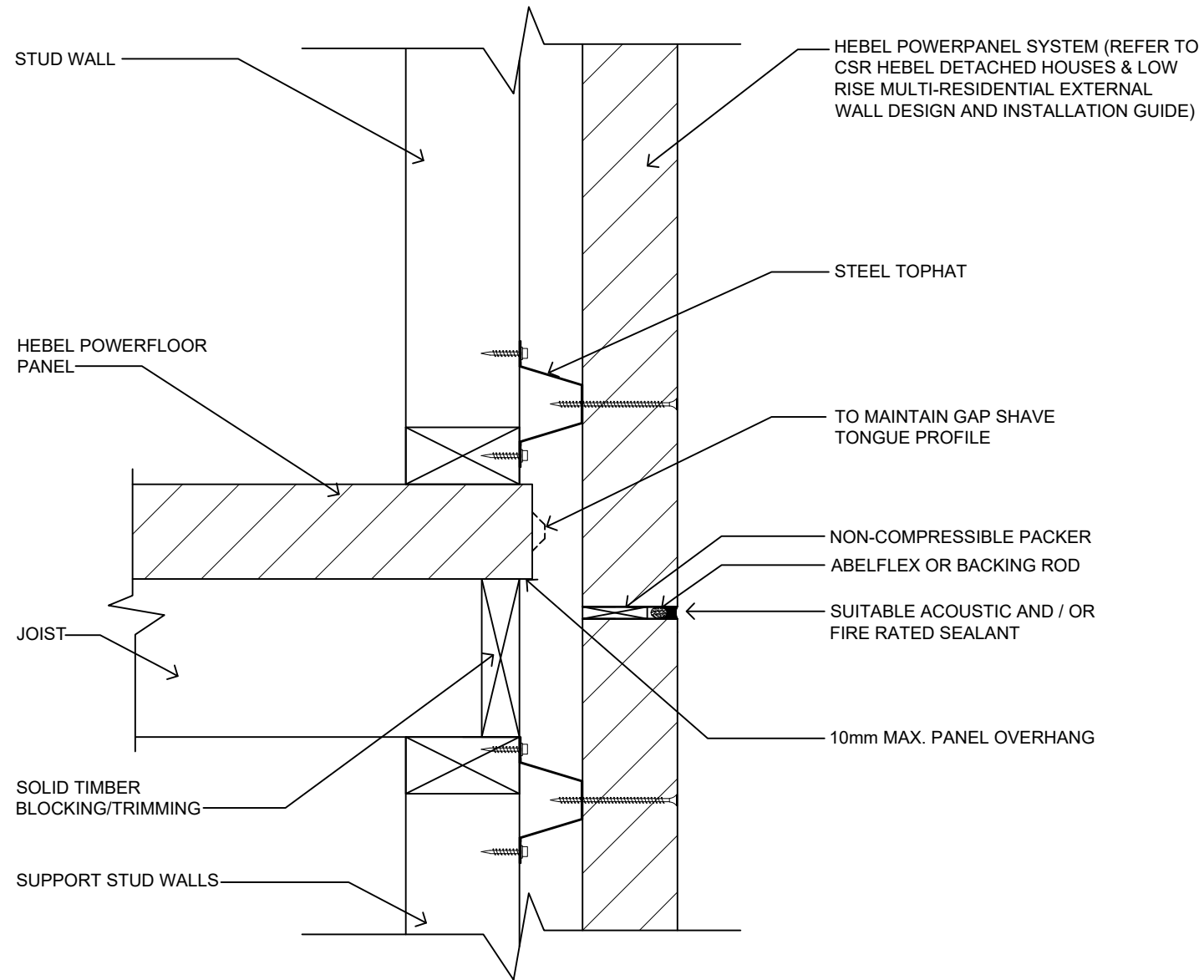
FIGURE	TITLE			
	HEBEL POWERFLOOR MULTI-LEVEL CONSTRUCTION DETAILS			
DESIGN GUIDE REFERENCE	SCALE	SHEET SIZE	DRAWN	DATE
	1:5 @ A3	A3	ZK	15.06.18
HELI017 JUNE 2018		SHEET NO. 1 of 3	CHECK ZK	REVISION B

HEBEL POWERFLOOR
MULTI-LEVEL CONSTRUCTION DETAILS

NOTE:
- FITTED FLOORING IS REQUIRED WHERE THE BEARING STRESS IN THE HEBEL POWERFLOOR PANEL, AT THE TOP OF JOISTS OR THE TOP OF BLOCKING BETWEEN JOISTS EXCEEDS 1MPa.
- THE DETAILING OF THE CLADDING SYSTEM SHOWN BELOW IS FOR INDICATIVE PURPOSES ONLY. THE PROJECT DESIGNER SHALL SPECIFY THE CONSTRUCTION DETAILS FOR THE PROJECT.



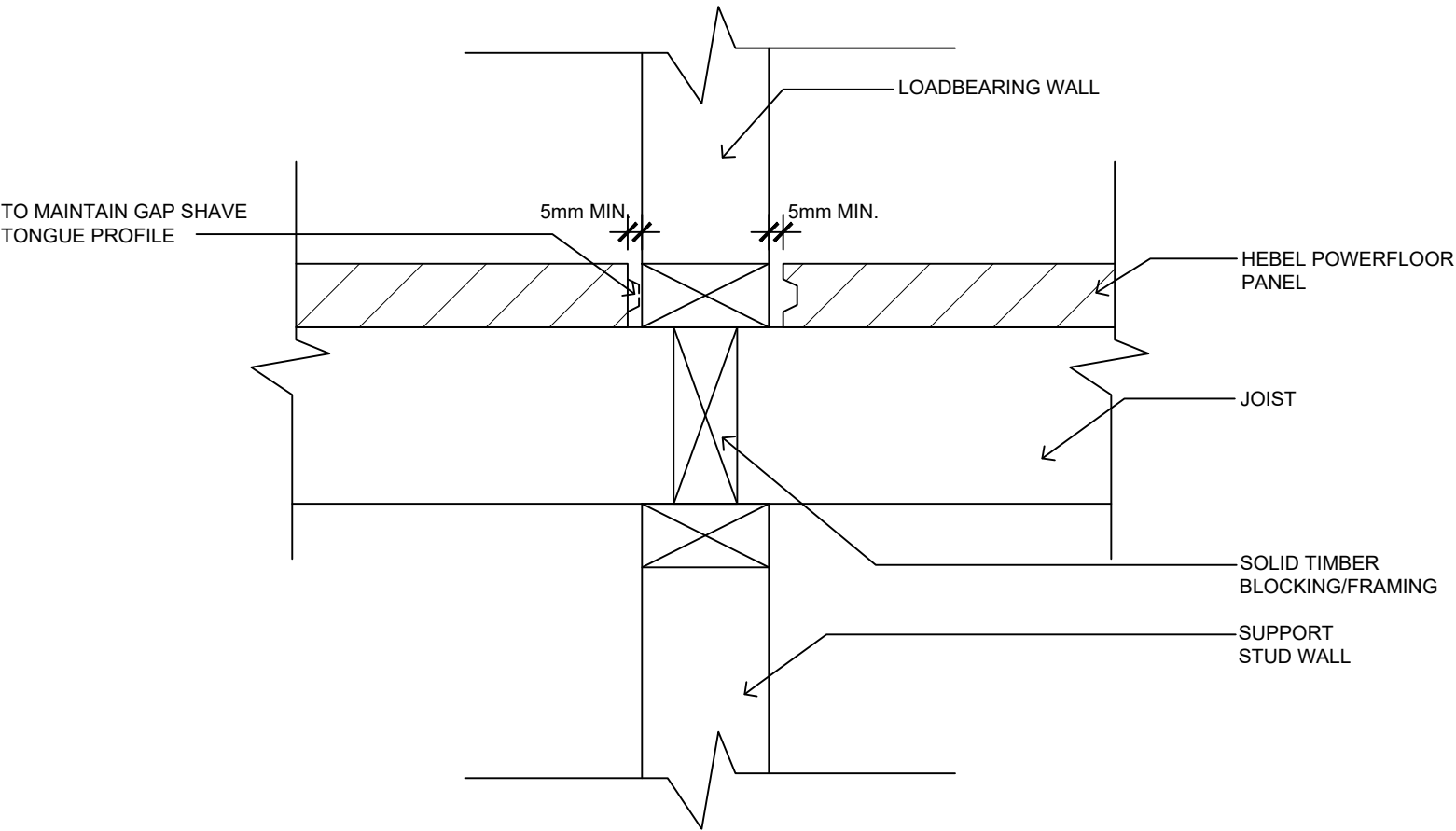
FITTED BEARING BLOCKING
SCALE: 1:5



PLATFORM FLOORING WITH EXTERNAL
LOADBEARING WALL
SCALE: 1:5

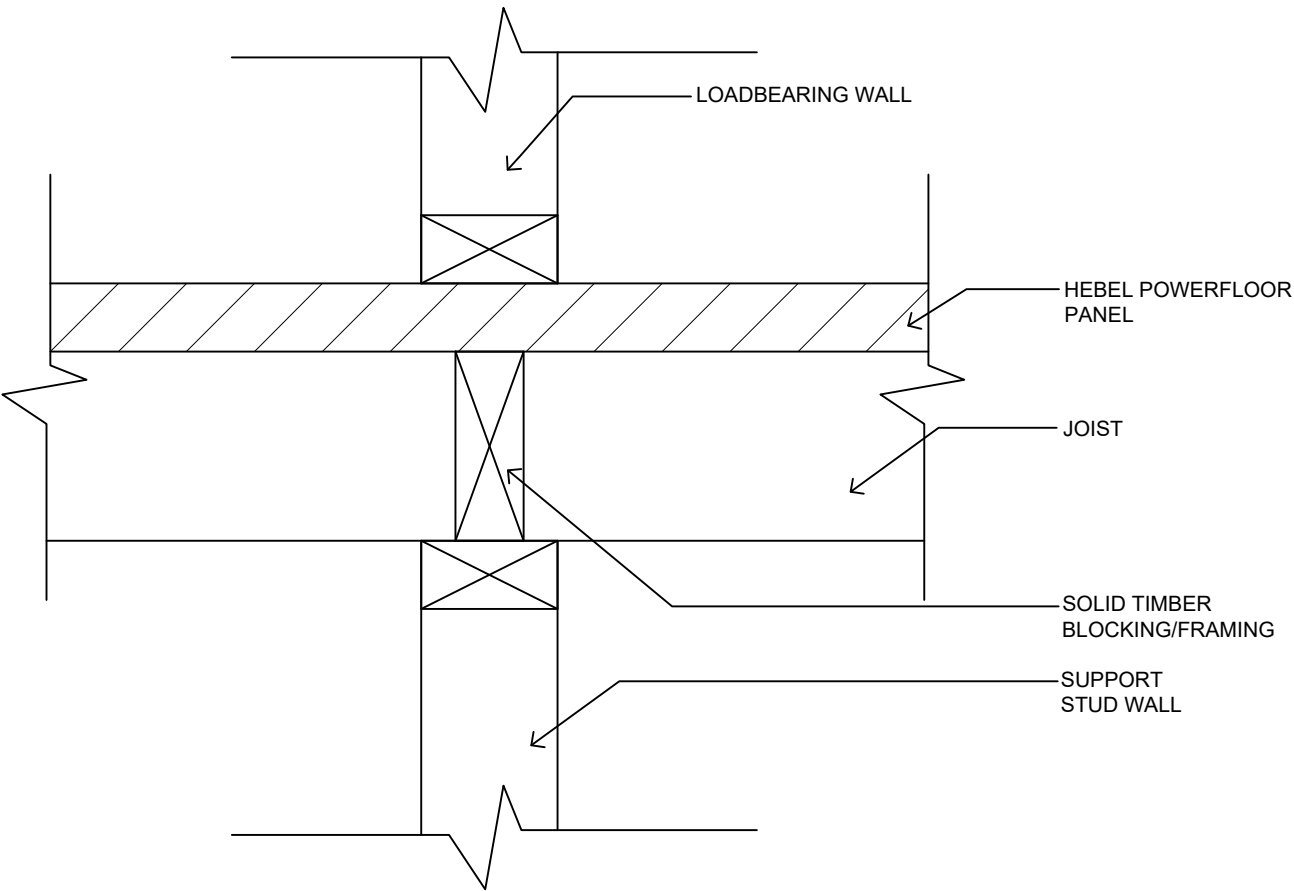
HEBEL POWERFLOOR MULTI-LEVEL CONSTRUCTION DETAILS

NOTE:
- FITTED FLOORING IS REQUIRED WHERE THE BEARING STRESS IN THE HEBEL POWERFLOOR PANEL, AT THE TOP OF JOISTS OR THE TOP OF BLOCKING BETWEEN JOISTS EXCEEDS 1MPa.
- THE DETAILING OF THE CLADDING SYSTEM SHOWN BELOW IS FOR INDICATIVE PURPOSES ONLY. THE PROJECT DESIGNER SHALL SPECIFY THE CONSTRUCTION DETAILS FOR THE PROJECT.



FITTED FLOORING WITH INTERNAL
LOADBEARING WALL

SCALE: 1:5



PLATFORM FLOORING WITH INTERNAL
LOADBEARING WALL

SCALE: 1:5



CSR BUILDING PRODUCTS LTD
Head Office: Trinit 3, 39 DELHI RD, NORTH RYDE NSW 2113
LOCKED BAG 1345, NORTH RYDE BC NSW 1670
A.B.N. 55 008 631 356 Ph: 1300 369 448
www.hebelaustralia.com.au



112 Wisemans Ferry Road
Somersby, NSW 2250
Phone: (02) 4340 3380
Fax: (02) 4340 3300

FIGURE	TITLE			
	HEBEL POWERFLOOR MULTI-LEVEL CONSTRUCTION DETAILS			
DESIGN GUIDE REFERENCE	SCALE	SHEET SIZE	DRAWN	DATE
	1:5 @ A3	A3	ZK	15.06.18
HELI017 JUNE 2018		SHEET NO. 3 of 3	CHECK ZK	REVISION B